

More information
on the product page



AMTRK-PRO

Dock leveller with swing lip

- Designed for pallet handling
- Robust steel structure
- Quick and safe loading
- Anti-slip layer for leveller contact elements
- Chamfered lip
- One-button control
- Possibility of coupling ramp with door and pneumatic seal
- Easy installation
- Possibility to adapt the product to individual requirements

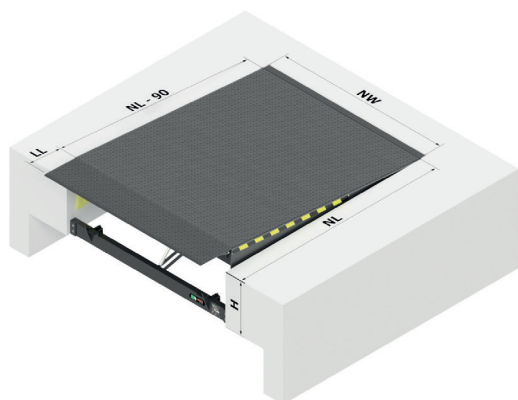


AC 082




General information

The swing lip dock leveller is designed for pallet handling by forklift trucks of articulated lorries. The dock leveller is equipped with a stable hinged lip to ensure fast and safe loading. The dock leveller is CE marked. The access platform is made of 6/8 mm thick chequered plate. It is integrated into the service support and connected at the rear of the dock leveller frame by means of hinges. Full safety of use is ensured by the anti-slip surface, foot protection along the entire length of the platform and full range of dock leveller lifting. Different ways of embedding the platforms in the foundation are possible



Technical data*

Application	Handling systems
Nominal length (NL)	2000, 2500 , 3000, 3500, 4000 mm
Nominal width (NW)	2000 , 2250 mm
Structural height	610 mm
Access nominal length (LL)	400 , 500 mm
Sheet thickness	6/8 mm
Nominal load-bearing capacity	6 , 10, 12 tonnes (60 , 100, 120 kN)
Operating ranges above level (A)**	from 0 to 290 mm
Operating ranges below level (B)**	from 0 to 350 mm
Supply voltage	400V
Engine power	1,1 kW
Control voltage	24 VDC
Type of protection	IP54
Tank capacity	5 dm ³
Operating medium	MOBIL DTE 10 EXCEL 15
Operating pressure	130 bar
Standard colours:	RAL 9005  (two-component resin-based paint)

* Possibility to adapt the product to customer requirements.

** Operating range for AMTRK-PRO.

The maximum platform inclination in accordance with EN 1398 is 12.5%.

The guidelines necessary for the preparation of the slot and the installation depend on the existing installation conditions:

- DOK standard
- Frame-formwork DOCK
- Frame DOCK

Standard equipment

- electrical installation,
- hydraulic system,
- control box,
- swing lip in the straight version,
- platform varnished RAL 9005,
- CE declaration of conformity.

Hydraulic drive

- the drive system of the leveller consists of a set of cylinders responsible for lifting the platform and swinging the lip,
- the lip is lifted by a separate cylinder, supplied separately from the hydraulic unit,
- closed hydraulic system,
- smooth adaptation to the vehicle height during loading.

Control

A standard SL100 one-button is included. It is possible to combine the ramp control system with a door control system. The entire SL100 control series can also be coupled with the pneumatical seal AMTR-P.



SL100
STANDARD



SL101
AUTO-RETURN



SL110
GATE-LEVELLER

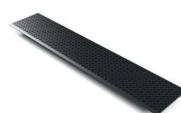


SL111
AUTO-RETURN+GATE-LEVELLER

Lip types

The tongue of the AMTR-K PRO is made of high-grade sheet metal teardrop plate with a thickness of 12 mm and has a reliable hinge system that works even with heavy contamination. In addition, the tongue is beveled, which prevents damage to the wheels on the handling equipment.

Adaptable to your needs. On offer:



STRAIGHT LIP



DIAGONAL LIP



DIVIDED LIP

Safety devices

- protection in the event of power failure or use of the emergency stop (will stop in the current position),
- side black and yellow hazard markings,
- foot protection along the entire length of the platform.

Additional options

- dock leveller made in other dimensions and capacities, swing lip with a length of 500 mm,
- additional anti-slip coating of the leveller contact elements,
- leveller structural elements painted in any RAL colour or hot-dip galvanised,
- other than standard swing lip shape,
- normal or reinforced wheel stops of non-standard dimensions to absorb the impact,
- dock leveller in thermally insulated version,
- sealing in the event of an opening under the vehicle's hydro flap, powder coating,
- leveller structure and all hydraulic components made of acid-resistant steel.