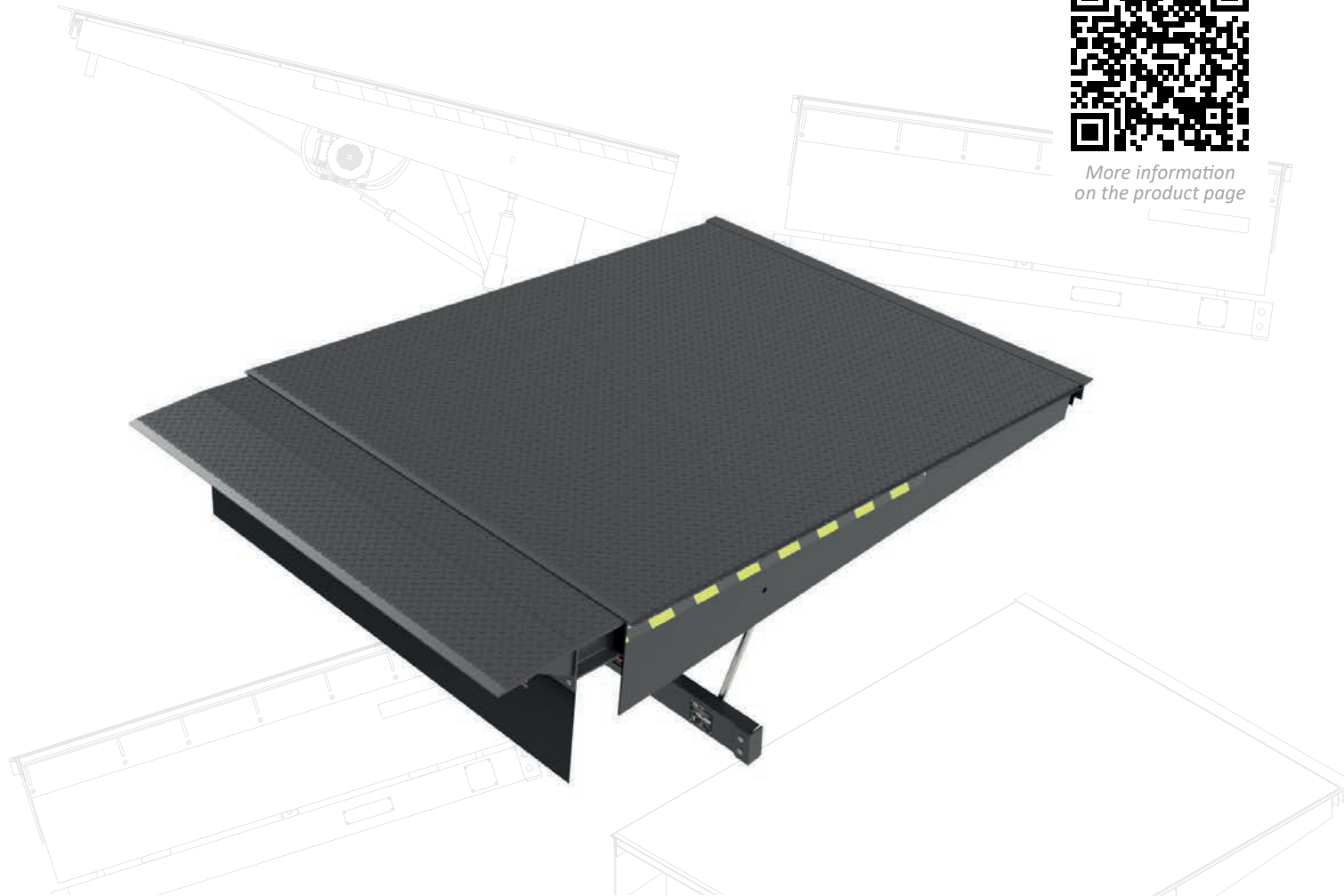




More information
on the product page



AMTRV-PRO

Dock leveller with pull-out lip

- Designed for pallet handling
- Robust steel structure
- Quick and safe loading
- Anti-slip layer for leveller contact elements
- Chamfered lip
- Four-button control
- Possibility of coupling the leveller to the door
- Easy installation
- Possibility to adapt the product to individual requirements

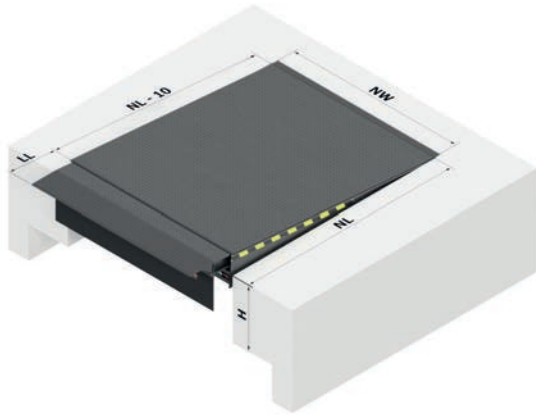


AC 082



General information

The pull-out lip dock leveller is designed for pallet handling by forklift trucks for articulated lorries. Its characteristic feature is an extending lip guided on bearing rollers. The dock leveller is CE marked. The access platform is made of 8/10 mm thick chequered plate. It is integrated into the service safety device and connected at the rear of the dock leveller frame by means of hinges. Full safety of use is ensured by the anti-slip surface, foot protection along the entire length of the platform and full range of dock leveller lifting. Different ways of embedding the platforms in the foundation are possible.



Technical data*

Application	Handling systems
Nominal length (NL)	2000, 2500 , 3000, 3500, 4000 mm
Nominal width (NW)	2000 , 2250 mm
Structural height	710 mm
Access nominal length (LL)	500 , 1000 mm
Sheet thickness	8/10 mm
Nominal load-bearing capacity	6 , 10, 12 ton (60 , 100, 120 kN)
Operating ranges above level (A)	from 0 to 280 mm
Operating ranges below level (B)	from 0 to -410 mm
Supply voltage	230 V/400 V
Engine power	1,5 kW
Control voltage	24 VDC
Type of protection	IP54
Tank capacity	7 dm ³
Operating medium	MOBIL DTE 10 EXCEL 15
Operating pressure	200 bar
Standard colours:	RAL 9005 ■ (two-component resin-based paint)

* Possibility to adapt the product to customer requirements.

The maximum platform inclination in accordance with EN 1398 is 12.5%.

The guidelines necessary for the preparation of the slot and the installation depend on the existing installation conditions:

- Standard DOCK
- Frame-formwork DOCK
- Frame DOCK

Standard equipment

- electrical installation,
- hydraulic system,
- control box,
- pull-out lip in the straight version,
- platform varnished RAL 9005,
- CE declaration of conformity.

Hydraulic drive

- the drive system of the leveller consists of a set of cylinders responsible for lifting the platform and extending the lip,
- the lip is extended by a separate cylinder, supplied separately from the hydraulic unit,
- closed hydraulic system,
- smooth adaptation to the vehicle height during loading.

Control

The four-button control unit AMTRV-PRO AUTO is included in the scope of delivery to enable coupling with the door. It is also possible to connect the dock leveller with the door (it is not possible to control the dock leveller without opening the door - protection against damage to the door)

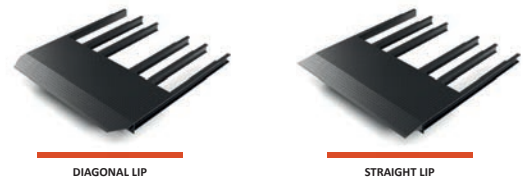


AMTRV-PRO AUTO

Lip types

The lip of the AMTRV-PRO is manufactured from 12 mm (12/14 mm) high quality tread sheet metal with a robust, reliable and maintenance-free pull-out mechanism. The pull-out lip of the platform can be manufactured in two different shapes: a straight lip and a diagonal lip.

Adaptable to your needs. On offer:



Safety devices

- protection in the event of power failure or use of the emergency stop (will stop in the current position),
- side black and yellow hazard markings,
- foot protection along the entire length of the platform.

Additional options

- dock leveller made in other dimensions and capacities,
- pull-out lip with a length of 1000 mm,
- additional anti-slip coating of the leveller contact elements,
- eveller structural elements painted in any RAL colour or hot-dip galvanised,
- other than standard pull-out lip shape,
- normal or reinforced wheel stops of non-standard dimensions to absorb the impact,
- sealing in the event of an opening under the vehicle's hydro flap,
- powder coating,
- leveller structure and all hydraulic components made of acid-resistant steel.