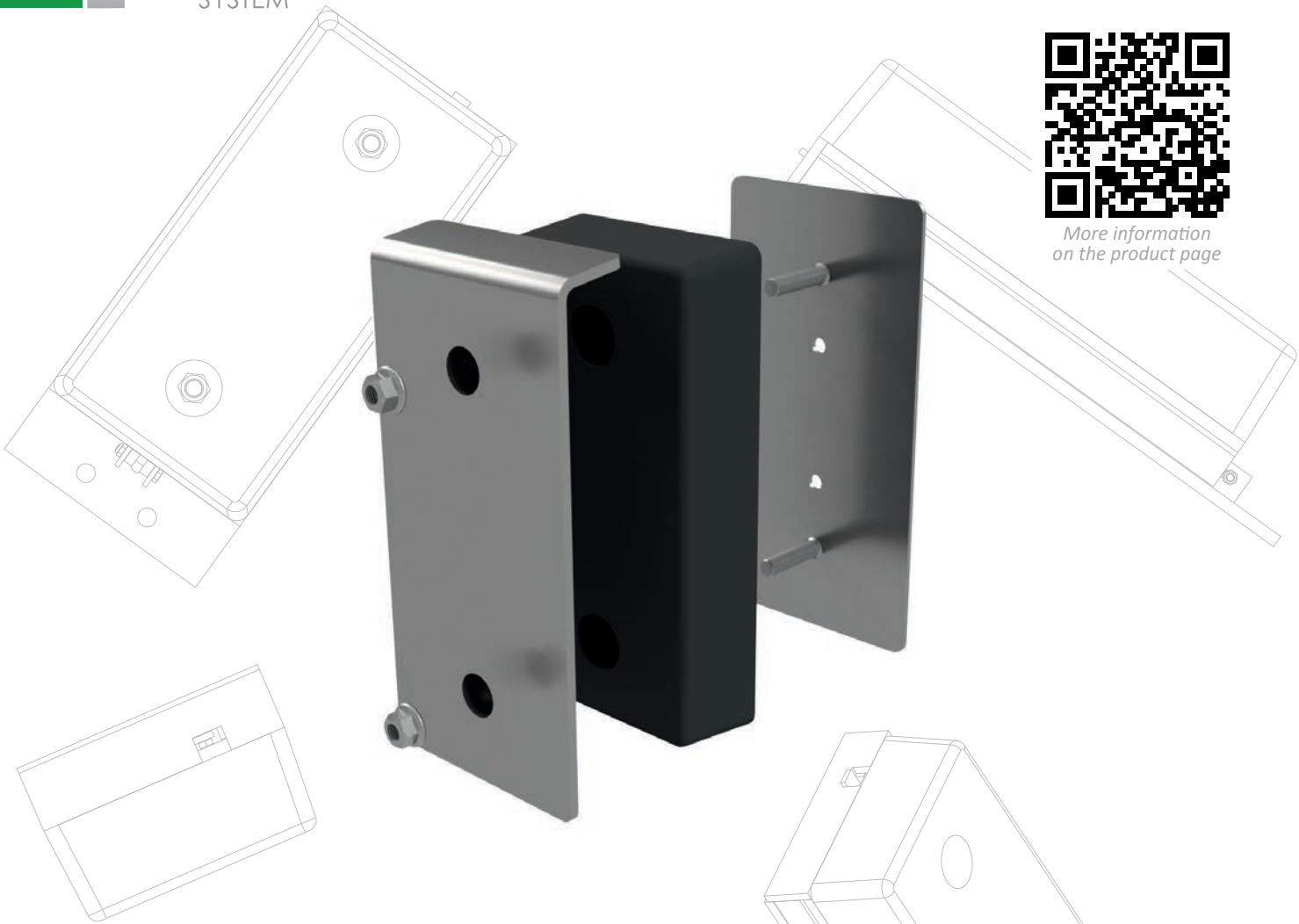


More information
on the product page



AMTR

Loading Dock Bumpers

- Quick, safe loading
- Optimising the handling process
- Effective protection against impact and damage.
- Avoiding accidental damage to the docking system structure
- Additional loading and unloading protection
- Improved working comfort
- Easy installation



AC 082



General information

The primary function of the wheel stops is to protect and secure the loading and unloading system from direct contact with the docking vehicle. Thanks to their ergonomic design, the buffers intercept the load during the docking process, ensuring a safe distance between the object and the approaching vehicle, eliminating the possibility of damage.

Characteristics

- absorption of the forces generated by the contact between the lorries and the loading bay,
- Depending on the docking system, different types of loading dock bumpers can be selected to guarantee the greatest possible level of safety.

Fixed loading dock bumpers

Standard loading dock bumper

A loading dock bumper with standard dimensions and a resilient design to ensure maximum safety when docking the vehicle.



Dimensions
Materials
Installation

450x70x80 mm
High quality rubber
expansion anchors

JUMBO-PRO loading dock bumper

The JUMBO-PRO loading dock bumper with a steel base is fixed with steel anchors through the base plate. This type of installation increases the loading dock bumper's fixing strength and durability.



Dimensions
Materials
Installation
Finish

250x500x100mm
High quality rubber, steel
expansion anchors
RAL 9005

JUMBO-PRO loading dock bumper with steel base and front reinforcement

The JUMBO-PRO loading dock bumper with a steel base and front reinforcement is fixed to the docking bay using a steel mounting plate. Additional steel armoring increases its service life.



Dimensions
Materials
Installation

250x500x100mm
High quality rubber, steel
expansion anchors

Movable loading dock bumpers

Movable loading dock bumper

The movable loading dock bumper is made of heavy-duty rubber and a steel base containing the elements responsible for vertical movement. The loading dock bumper is equipped with a movable mechanism that allows the rubber to adapt to the vehicle level during loading and unloading.



Dimensions
Materials
Installation
Finish

510x250x152 mm
High quality rubber, steel, movable mechanism
expansion anchors
Galvanised or painted

Armoured loading dock bumper

The armoured loading dock bumper has been developed for customers who appreciate the highest durability and service life even in the most demanding conditions. The galvanic coating of the steel part provides weather resistance.



Dimensions
Materials
Installation
Finish

500x200x100mm
High quality rubber, steel
expansion anchors
Galvanised

ESS loading dock bumper

The ESS loading dock bumper is made of heavy-duty rubber and a steel base containing the elements responsible for vertical movement. The loading dock bumper is fitted with a mechanism allowing it to be extended to a height of 250mm.



Dimensions
Materials
Installation

250x500x100 mm
High quality rubber, steel
expansion anchors