



More information
on the product page



AMTRV-CD

Variable load capacity dock leveller (60 kN/20 kN)

- Strong and robust steel structure
- The pull-out part of the dock leveller is divided into two separate segments
- Handling of vans and lorries
- Quick and safe loading
- Anti-slip layer for leveller contact elements
- Chamfered lip
- Four-button control + load capacity selection switch
- Possibility of coupling the leveller to the door
- Easy installation
- Possibility to adapt the product to individual requirements

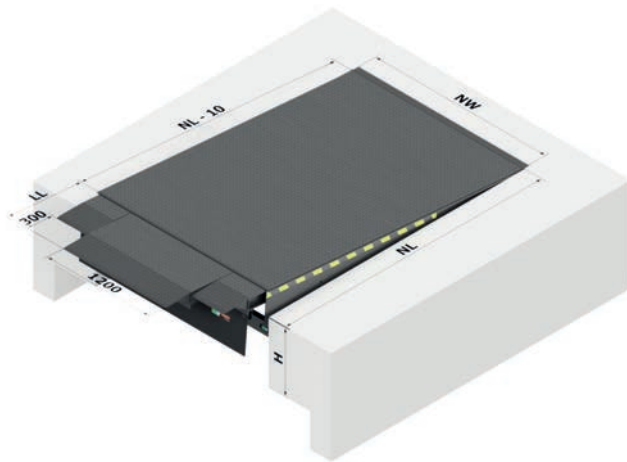


AC 082



General information

The AMTRV-CD variable capacity dock leveller is designed to ensure the smooth loading and unloading of both lorries and delivery trucks using the same loading platform.



Technical data*

Application	Handling systems
Nominal length (NL)	3000, 3500, 4000 mm
Nominal width (NW)	2000 mm
Structural height	800 mm
Access nominal length (LL)	500, 1000 mm
Sheet thickness	8/10 mm
Nominal load-bearing capacity	2/6 ton (20/60 kN)
Operating ranges above level (A)	from 0 to 415 mm
Operating ranges below level (B)**	from 0 to 530 mm
Supply voltage	230 V/400 V
Engine power	1,5 kW
Control voltage	24 VDC
Type of protection	IP54
Tank capacity	7 dm ³
Operating medium	MOBIL DTE 10 EXCEL 15
Operating pressure	150 bar
Standard colours:	RAL 9005 ■ (two-component resin-based paint)

* Possibility to adapt the product to customer requirements.

** Operating range for AMTR-CD 30

The maximum platform inclination in accordance with EN 1398 is 12.5%.

The guidelines necessary for the preparation of the slot and the installation depend on the existing installation conditions:

- Standard DOCK
- Frame-formwork DOCK

Standard equipment

- electrical installation,
- hydraulic system,
- control box,
- three-part pull-out lip,
- platform varnished RAL 9005,
- CE declaration of conformity.

Hydraulic drive

- the drive system consists of a set of cylinders allowing for independent lip central section extension,
- the lip is extended by a separate cylinder, supplied separately from the hydraulic unit,
- closed hydraulic system,
- smooth adaptation to the vehicle height during loading.

Control

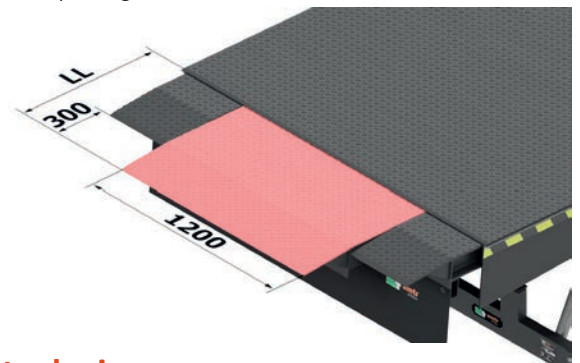
The four-button AMTRV-CD control unit is included in the scope of delivery, an intuitive control with compulsory selection of the 20 kN or 60 kN operating mode and a button responsible for auto-return. It is possible to couple the dock leveller control to the door control.



AMTR-CD CONTROL

Lip types

The telescopic lip in the AMTRV-CD dock leveller is manufactured from high quality 12 mm (12/14) corrugated sheet metal and fitted with a special, durable, contamination-resistant and maintenance-free pull-out mechanism. A system of simple, highly durable slides ensures its quiet and trouble-free operation. The AMTRV-CD dock leveller lip has a segmented design, allowing the operation of vehicles of different types, depending on the selected operating mode.



Safety devices

- protection in the event of power failure or use of the emergency stop (will stop in the current position),
- side black and yellow hazard markings,
- foot protection along the entire length of the platform.

Additional options

- dock leveller made in other dimensions,
- additional anti-slip coating of the leveller contact elements,
- leveller structural elements painted in any RAL colour or hot-dip galvanised,
- normal or reinforced wheel stops of non-standard dimensions to absorb the impact,
- sealing in the event of an opening under the vehicle's hydro flap,
- powder coating,
- leveller structure and all hydraulic components made of acid-resistant steel.