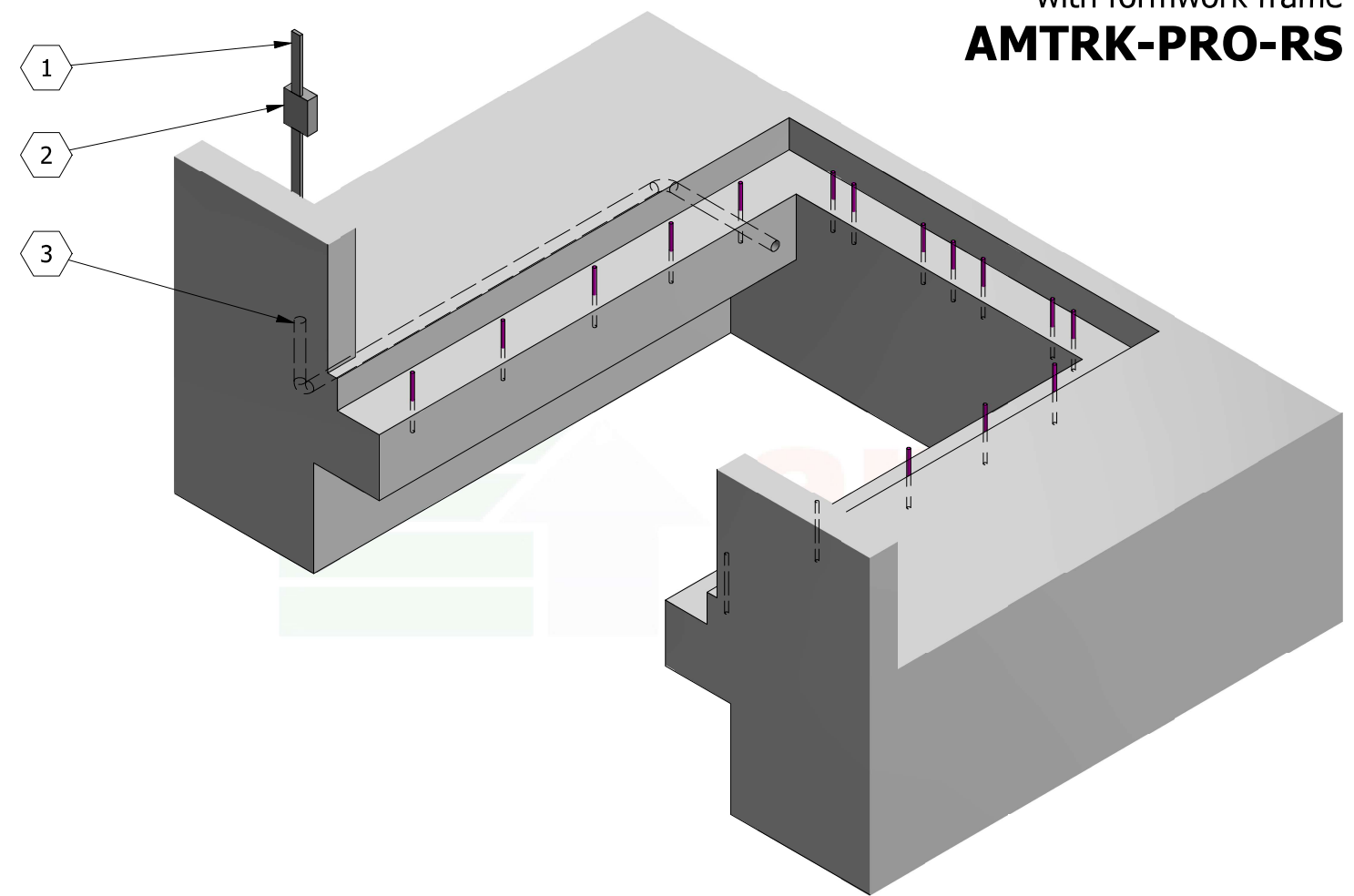
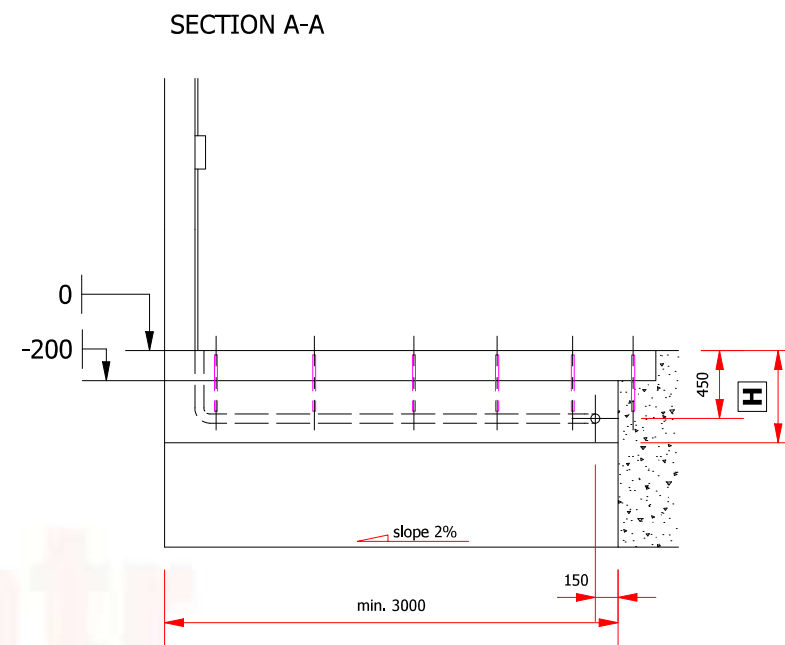
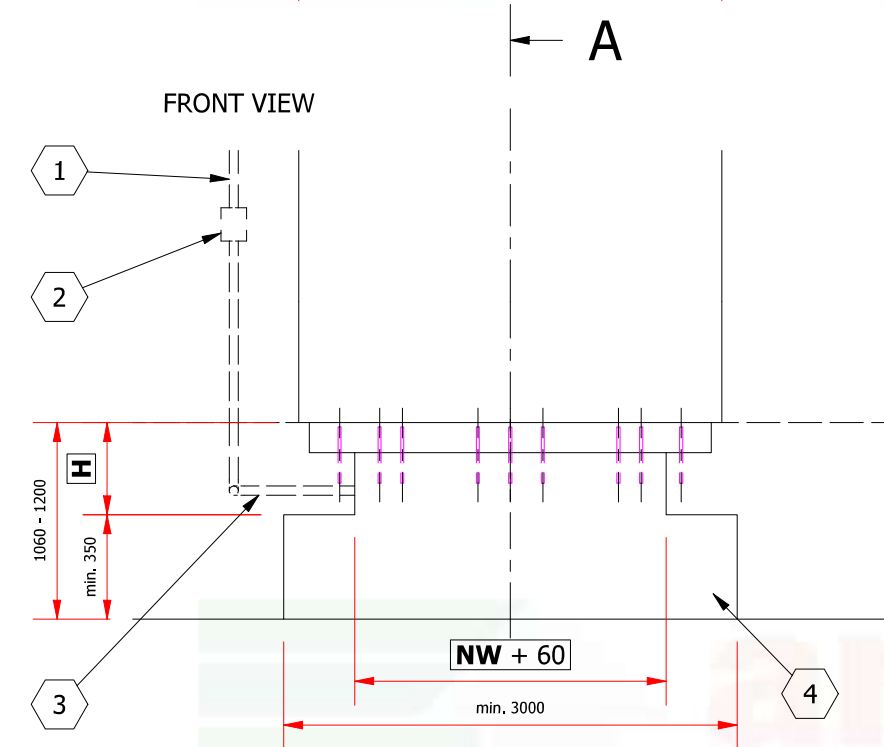
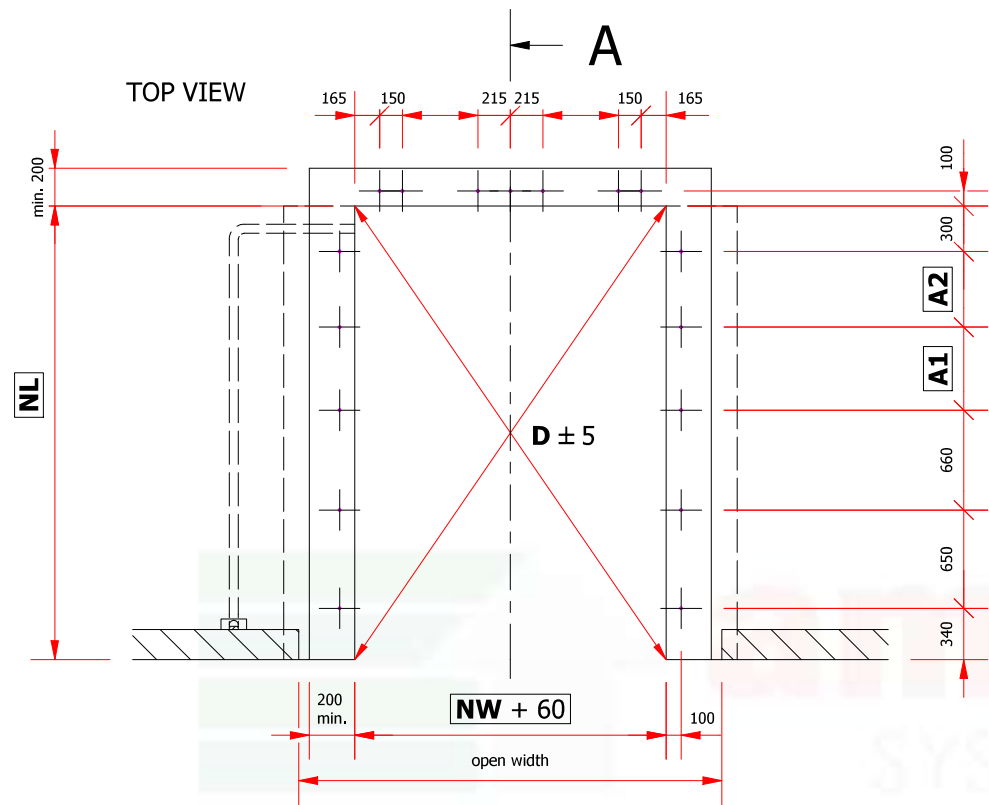


Guidelines for dock leveller with telescoping lip
with formwork frame
AMTRK-PRO-RS



Description:

1. Power supply - 400 V, 50 Hz, 3 phase, neutral and earth terminating in isolator fixed in position shown. Hydraulic unit motor power: 1,5 kW. Recommended wire cross-section: 2,5 mm².
2. Control panel. Provide suitable mounting surface for control panel; dimensions 180x250mm.
3. PCV electrical conduit (min. $\varnothing 60$) for electrical connections between dock leveller and control panel.
4. Bay for car lift.

Notes:

1. Dock leveller must be installed before pouring concrete floor.
2. PCV electrical conduit (3) must be placed as well before flooring.
3. At bumper fixation points forces of 59kN to be expected on prefabricated concrete with 30tons lorries and a velocity of 5km/h.

NW	- nominal width	2000	2000	2000	2250	2250	2250	
NL	- nominal length	2000	2500	3000	2000	2500	3000	
NW + 60	- foundation width	2060	2060	2060	2310	2310	2310	
H	- construction height	710	710	710	710	710	710	
A1	- additional rebar spacing	-	550	550	-	550	550	
A2	- additional rebar spacing	-	-	500	-	-	500	

Designed by P. Pomykała	Checked by M. Palega	Approved by G. Mazurkiewicz	Date X : X	Date 26.10.2021	A3
----------------------------	-------------------------	--------------------------------	---------------	--------------------	----



Guidelines for spacing between rebars

AMTRV-PRO-RS	Edition 1.2	Sheet 1 / 1
--------------	----------------	----------------

* The drawing is an illustrative drawing, not made to scale. Detailed technical solutions may differ from the ones shown in the drawing.